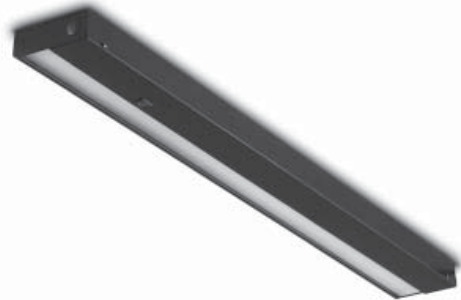


Jasmine

UCT task light

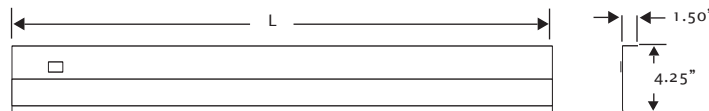
UCT base model includes:

- Energy efficient, low mercury T8 tri-phosphor 3500K fluorescent lamp
- Normal power factor electronic ballast
- g' black power cord with 90° plug, sw rotation, right hand exit
- Black rocker switch, 2 position, right side of fixture
- Prismatic lens
- UV stable silver reflector
- Mounting hardware package - screw mount only
- Paint finish - must specify
- UL and CUL



| Base Number | Standard | | |
|-------------|----------------------|---------------|--------------|
| | Suggested Shelf Size | Actual Length | Lamp Wattage |
| UCT 18 | 24" | 18" | 15 |
| UCT 24 | 30"-36" | 24" | 17 |
| UCT 36 | 42"-48" | 36" | 25 |
| UCT 48 | 54"-60" | 48" | 32 |

| Base Number | For Reuter overhead | | |
|-------------|----------------------|---------------|--------------|
| | Suggested Shelf Size | Actual Length | Lamp Wattage |
| UCT KR 18 | 24" | 18" | 15 |
| UCT KR 24 | 30"-36" | 24" | 17 |
| UCT KR 36 | 42"-48" | 36" | 25 |
| UCT KR 48 | 54"-60" | 48" | 32 |



Specifying notes:

- The standard cord exit location on the UCT is the right end of the light.
- DIM3 is not available on the UCT18.
- When specifying the daisy chain (DC) option for the UCT, specify one DCP (power cord fixture) and up to 9 DCJ (jumper cord fixtures) - maximum total of 10 fixtures. See page 51 for more information.
- The power fixture in a daisy chain run can be specified as independent switching (DCP) or master control (MCDPCP).
- The DCP is available with a straight plug only.
- All daisy chain fixtures are only available with black cords.
- Cord managers are automatically included with daisy chain option.
- Dimming option automatically includes the high power factor electronic ballast option (ELE).
- The occupancy sensor (OS) and dimming options cannot be combined on any size UCT when using the daisy chain option.
- The occupancy sensor (OS) automatically includes the high power factor electronic ballast option (ELE).
- The occupancy sensor (OS) option is not available on the UCT18.
- Keyhole slots in housing allow the UCT to be mounted to wood or laminate shelves only.
- Cord covers are available in black (209), gray taupe (228), light tone (063), stone gray (062) and soft white (061); color code must be specified with size of cord cover.

Notes for UCT KR:

- The UCT KR can be mounted under a Reuter overhead and must be specified per chart above.
- The UCT KR is the Light Corporation equivalent to the Reuter task light.
- The daisy chain option is NOT available on the UCT KR.

Jasmine

UCT task light

UCT base model prices Standard

| Base Number | Suggested Shelf Size | Actual Length | List Price |
|-------------|----------------------|---------------|------------|
| UCT 18 | 24" | 18" | \$ 149.00 |
| UCT 24 | 30"-36" | 24" | 159.00 |
| UCT 36 | 42"-48" | 36" | 166.00 |
| UCT 48 | 54"-60" | 48" | 177.00 |

For Reuter overhead

| Base Number | Suggested Shelf Size | Actual Length | List Price |
|-------------|----------------------|---------------|------------|
| UCT KR 18 | 24" | 18" | \$ 159.00 |
| UCT KR 24 | 30"-36" | 24" | 166.00 |
| UCT KR 36 | 42"-48" | 36" | 174.00 |
| UCT KR 48 | 54"-60" | 48" | 183.00 |

Note: Suggested shelf size is based on the length of the task light. For assistance in determining size of shelf and brackets needed, refer to pages 56-57.

Option exceptions for UCT

DIM3 - not available on UCT18
 OS - not available on UCT18
 OS and DIM3 - cannot be combined on same fixture with daisy chain application
 OS - refer to page 52 for usage information

Cord cover color code

| Finish | Code |
|------------|------|
| Black | 209 |
| Gray taupe | 228 |
| Light tone | 063 |
| Stone gray | 062 |
| Soft white | 061 |

UCT option prices

| Option | Description | Code | List Price |
|--|---|----------------------------------|----------------------------------|
| Lamp: | 4100K 3000K | TRI41 TRI30 | \$ 0.00 0.00 |
| Ballast: | High performance / High power factor electronic | ELE | 40.00 |
| Cord exit: | Left hand Center Field interchangeable Hardwire | LH CC FIC HW | 6.00 6.00 12.00 0.00 |
| Cord rotation: | Straight plughead | SP | 0.00 |
| Cord color: <small>Available on straight cords only</small> | Gray Neutral | SPGR SPNL | 8.00 8.00 |
| Interconnect: | Power (Independent switching) | DCP | 46.00 |
| Daisy chain <small>All cords on daisy chain fixtures are black</small> | Power (Master control) Jumper cord 42" Jumper cord 54" Jumper cord 78" | MCDCP DCJ42 DCJ54 DCJ78 | 46.00 26.00 26.00 26.00 |
| Dimming: <small>Price of the ELE is included in price of this option</small> | 3 position stepped | DIM3 | 50.00 |
| Sensor: <small>Price of the ELE is included in price of this option</small> | Occupancy sensor | OS | 101.00 |
| Lens: | Linear prismatic (batwing) | BW | 10.00 |
| City code: (Chicago) | Fused plug -sw rotation Fused plug -straight | CHC9SW CHC9ST | 48.00 48.00 |
| Cord manager: | Horizontal 2- 2" vertical 1 2" vertical Bag of 50 horizontal (CM1) | CM1 CM2 CM3 CM4 | 3.00 3.00 3.00 37.00 |
| Cord cover: | 24" cover (add color code) 48" cover (add color code) | CMC24 CMC48 | 13.00 21.00 |

When choosing options refer to pages 48-53 to verify proper use.

How to specify the UCT task light

Example UCT 24 ELE BW 018

- base number
- hpf electronic ballast
- batwing lens
- paint finish

- Specify base number for appropriate shelf size.
- Select option code from list.
- Select option code from list.
- Select paint finish from page 54.
- Mounting hardware is supplied.

Call Light Corporation customer service to place an order, 1-800-544-4899.
 Prices are subject to change.